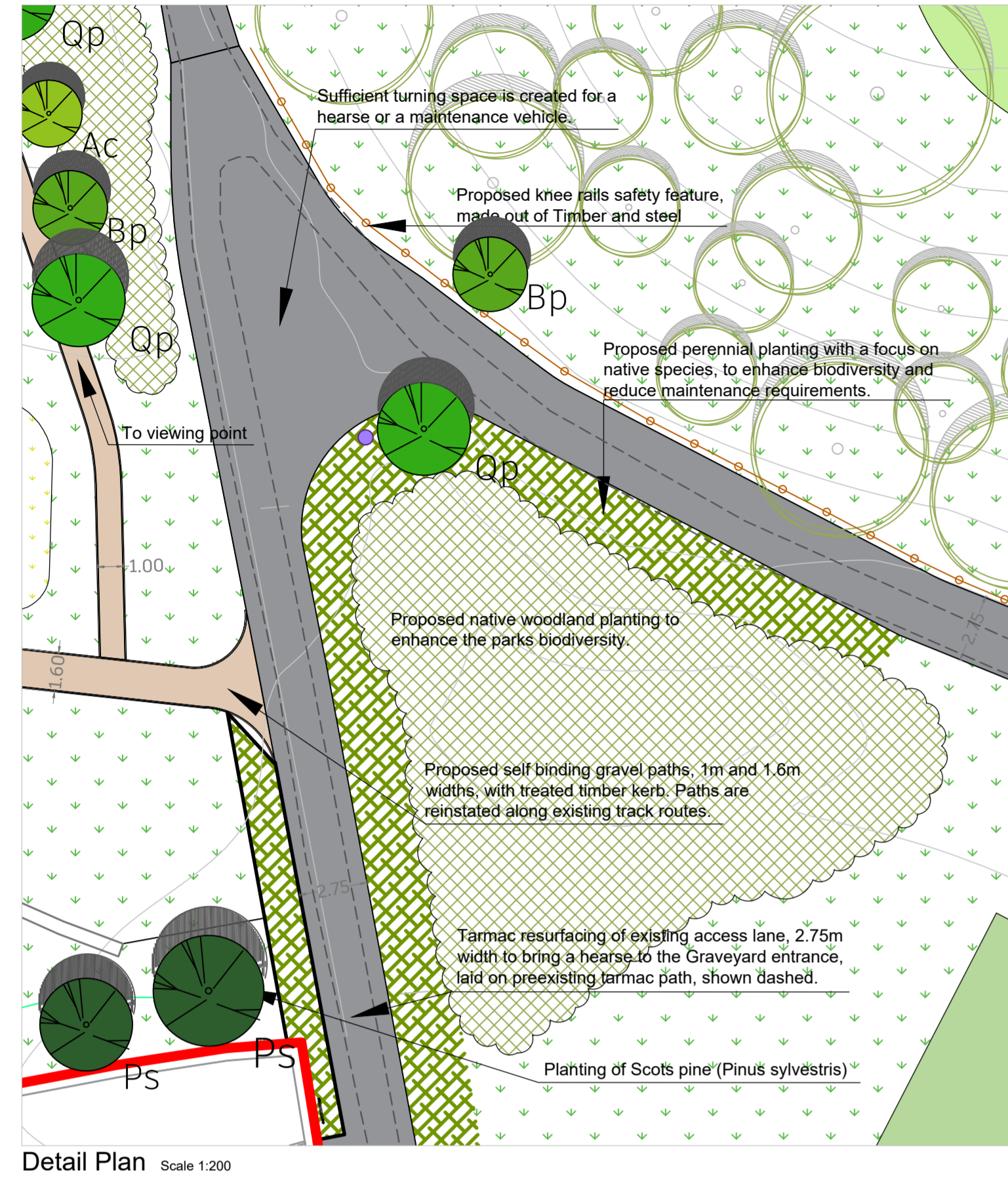


2.1 Access lane to St. John's Famine Graveyard detail



Features

2.1.1 Turning Head for Hearse

A new turning head is proposed for the access lane, this will allow room for the hearse or maintenance vehicle to turn without having to access the lawn.

2.1.2 Trees at St John's Famine Graveyard

Two groups of Scots Pine evergreen and Native to Ireland.

2.1.3 Gravel Path through Biodiversity area

Situated just above the entrance of the Graveyard a gravel path of 1.6m wide is proposed to reinstate an existing informal track, this path leads to the dog park along a route of interesting existing biodiversity projects by the Tidy Towns Group.

2.1.4 Safety Rail along Access Lane

The access lane from St Patrick's Avenue to St John's Famine Graveyard is to be resurfaced and widened to 2.75m. Due to the steep decline North of the path above the Kickabout area a safety guard must be installed.

2.1.5 Woodland Planting

Woodland planting will provide shelter, frame views and increase habitat for local wildlife on the site.



Reference photo of proposed woodland planting

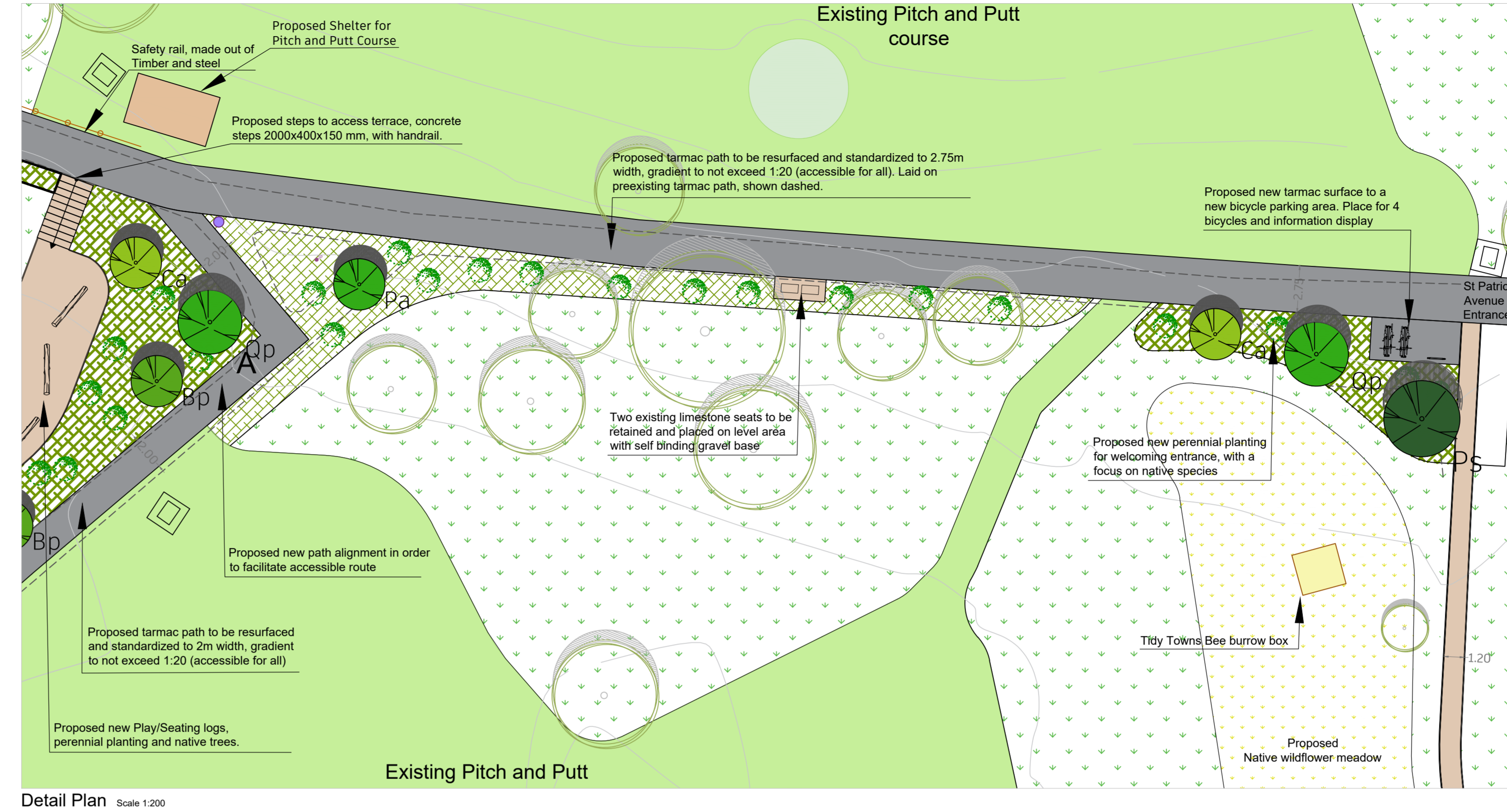


Timber safety rail N2 W5, supplied by HSD Ltd. Or similar approved



Scots Pine at St John's Famine Graveyard

2.2 Access lane and kickabout detail



Features

2.2.1 Terrace at Kickabout Area

The kickabout area (27x54m) is proposed to be leveled and resowed with a new lawn in order to facilitate play. A Terrace seating area is also created that can be accessed by concrete steps (see detail on drawing P528-103), handrail and steps to be built to building regulation standards.

2.2.2 Native Wildflower Meadow

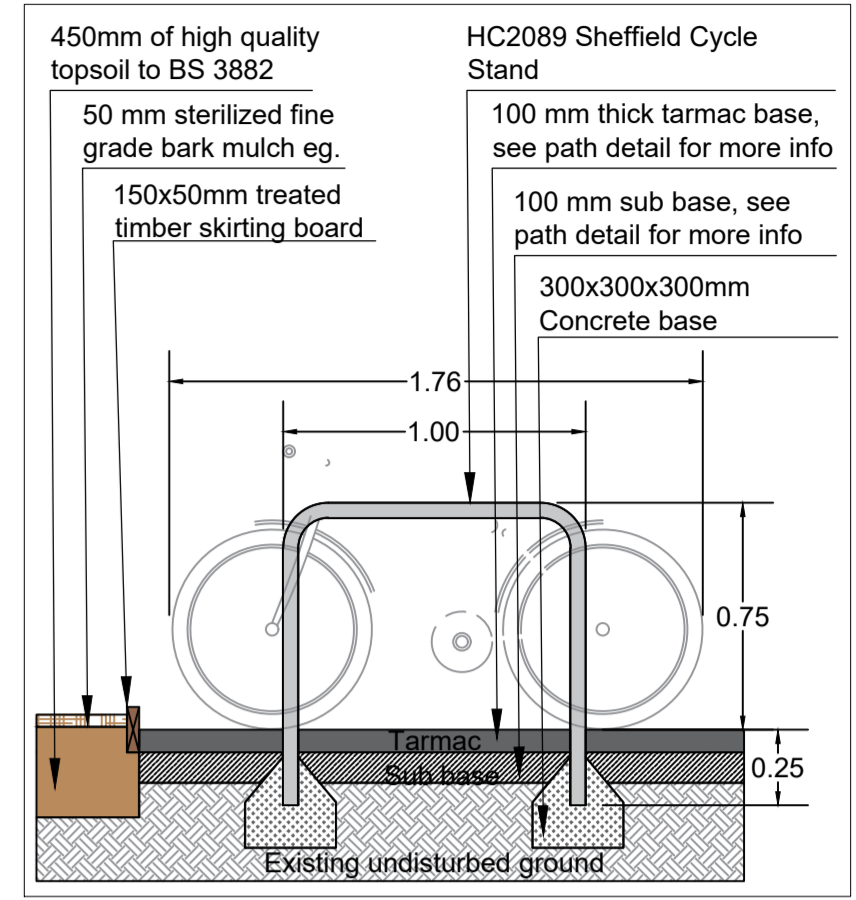
A Native Wildflower Meadow is proposed stretching from the entrance at St Patrick's Avenue to meet the Clanwilliam Rugby Football Club Boundary.

2.2.3 Bicycle Parking and Information Display

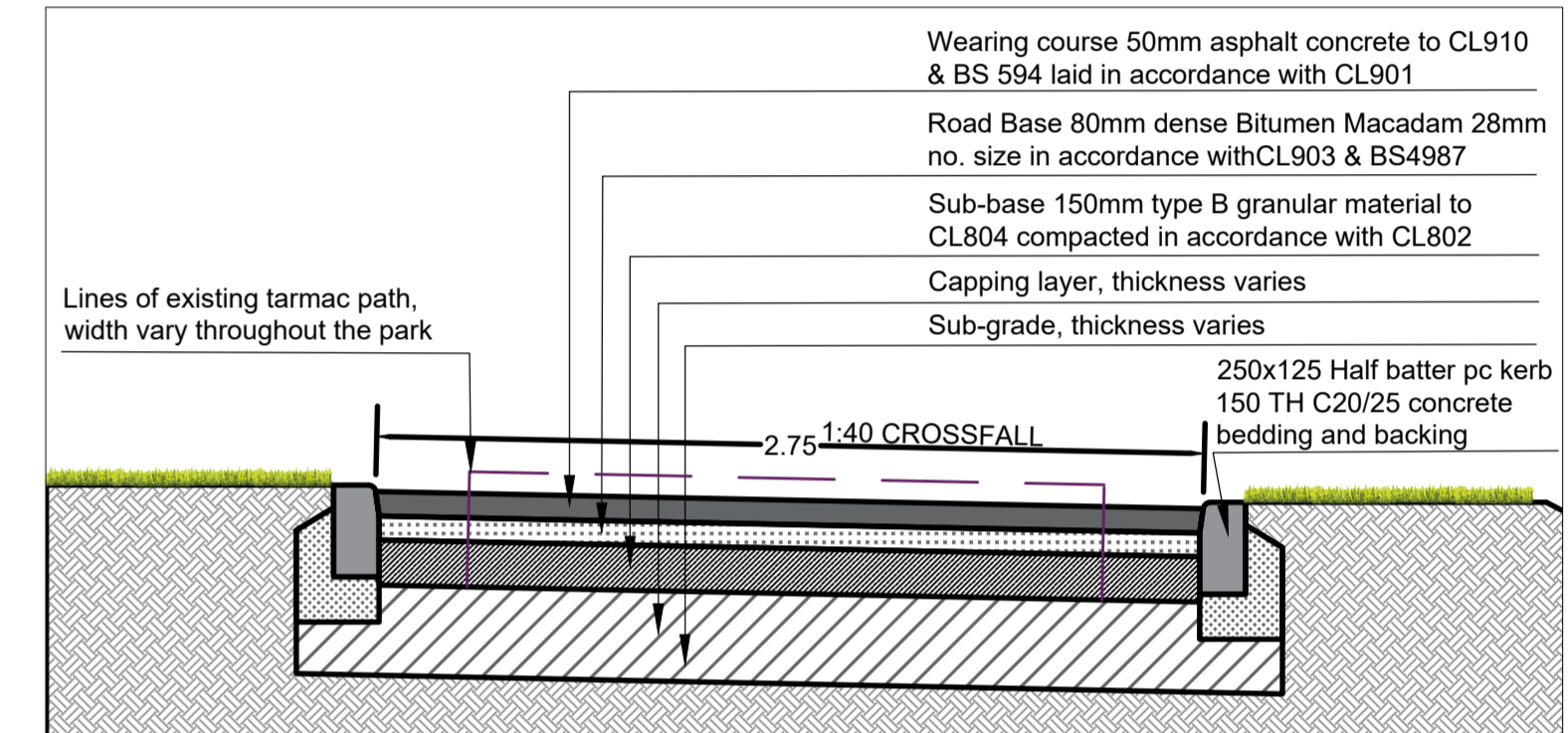
Bicycle parking to accommodate for four Bicycles is proposed at the St. Patrick's Avenue Entrance to the park.

2.2.4 Path around Clanwilliam Rugby Club

Existing deteriorated tar and chip path to be removed, and a new 1.2m wide self binding gravel path installed in its place, with treated timber kerbing, passing points are also included in this path upgrade.

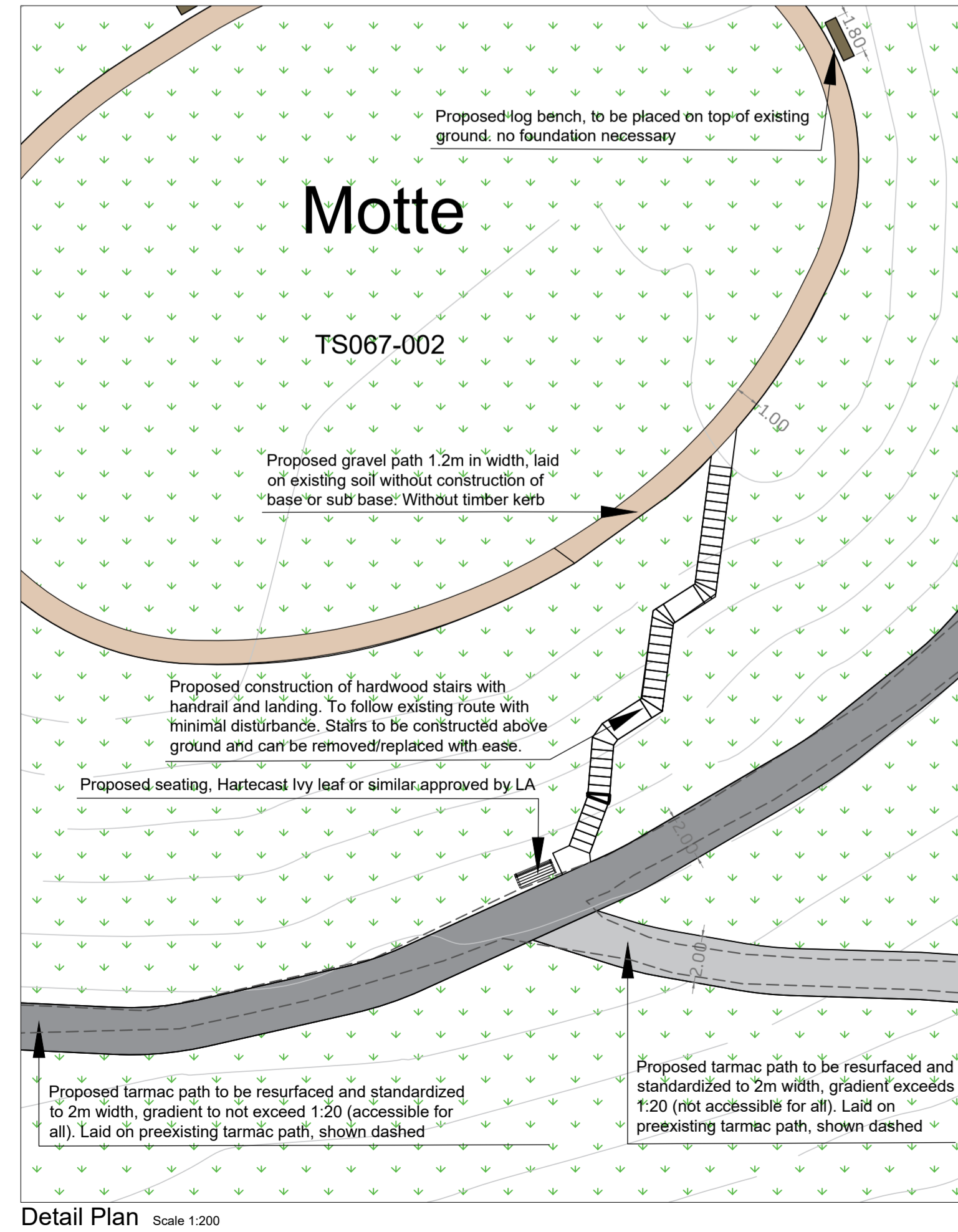


Detail Bicycle Parking Scale 1:25



Detail Tarmac Footpath Scale 1:25

2.3 Detail Motte



Features

2.3.1 Steps and Handrail Construction

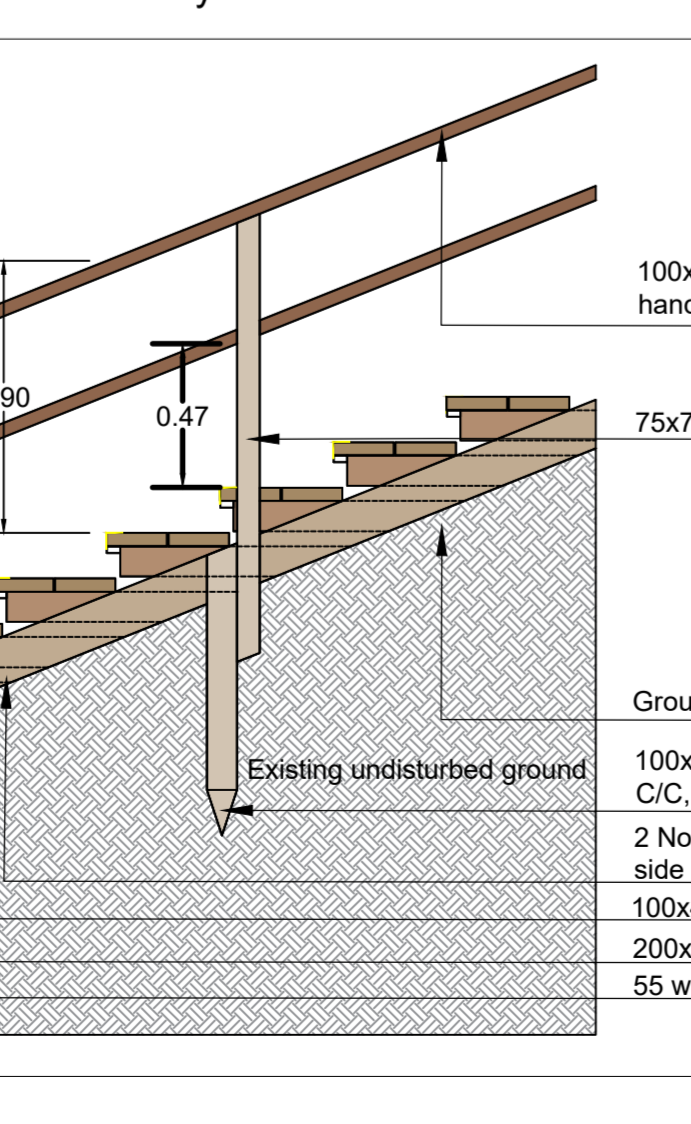
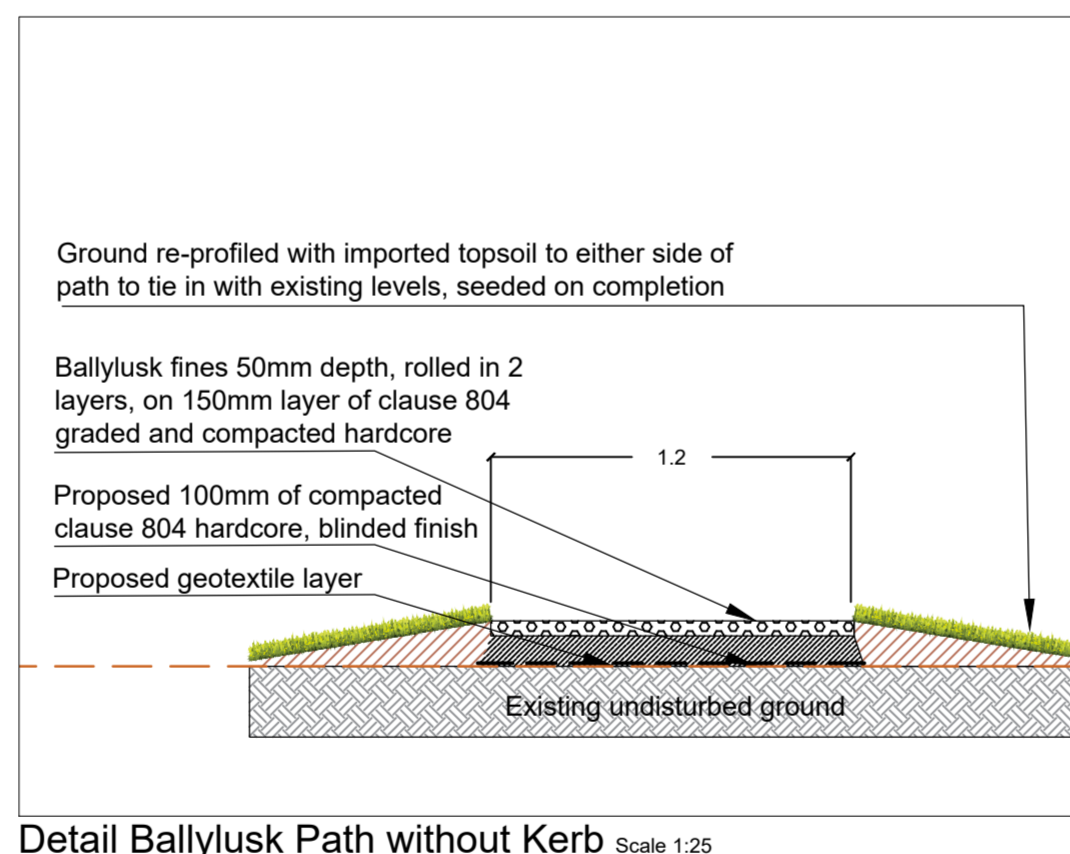
A timber floating stairs with handrail will be installed as access to the top of the Motte. This will reduce erosion and impact on the heritage site.

2.3.2 Ballyusk Gravel Path without Kerb

A self binding gravel path without kerb, will provide a formal circular route on the top of the Motte.

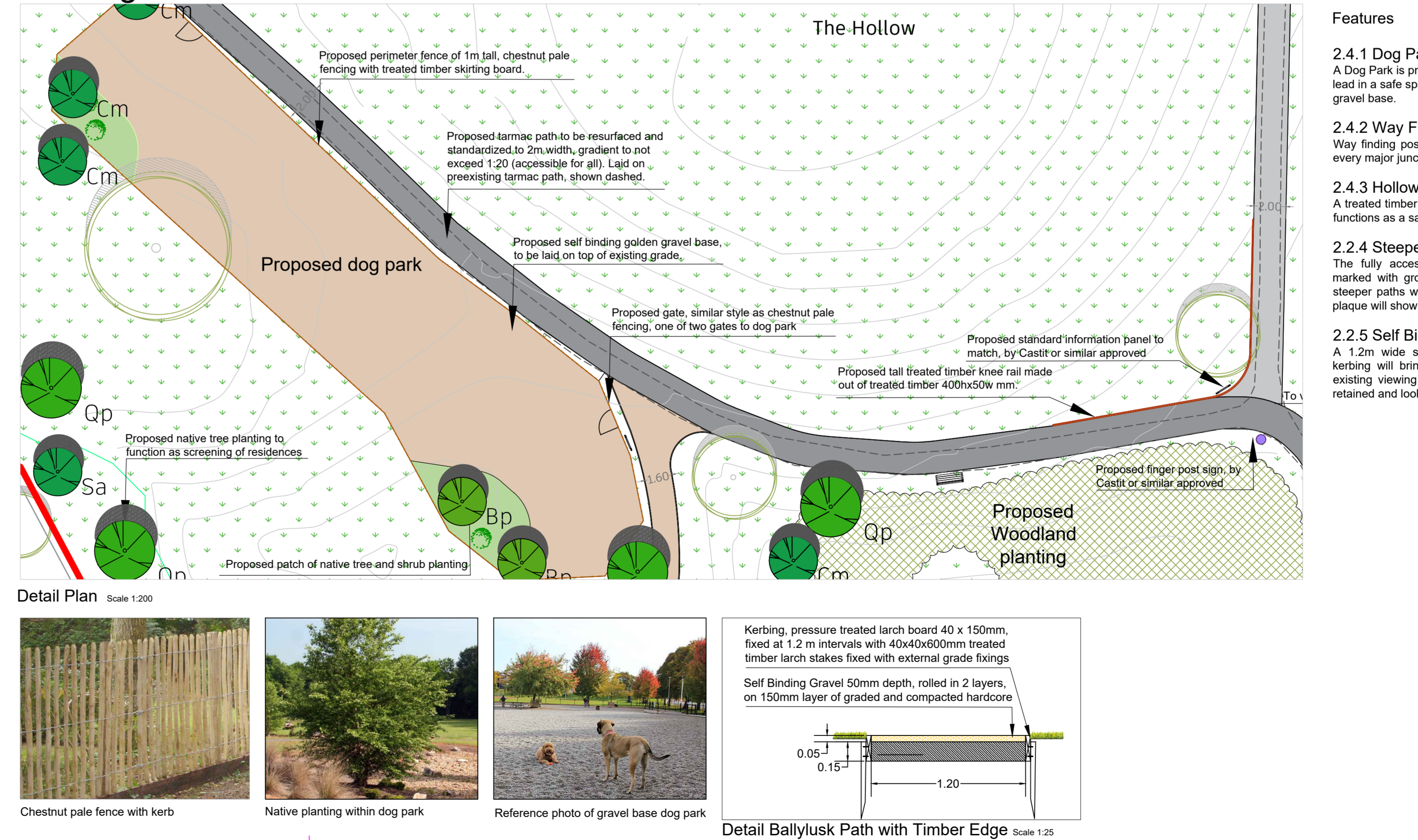
2.3.3 Log Benches on top of the Motte

Log benches will provide seating at the top of the Motte, they are low impact and informal.



Detail Hardwood Stairs Scale 1:25

2.4 Dog Park Detail



Features

2.4.1 Dog Park

A Dog Park is proposed to allow visitors to have their dog off lead in a safe space. The dog park will have a self binding gravel base.

2.4.2 Way Finding Posts

Way finding posts are provided along the accessible path at every major junction.

2.4.3 Hollow knee rail and information

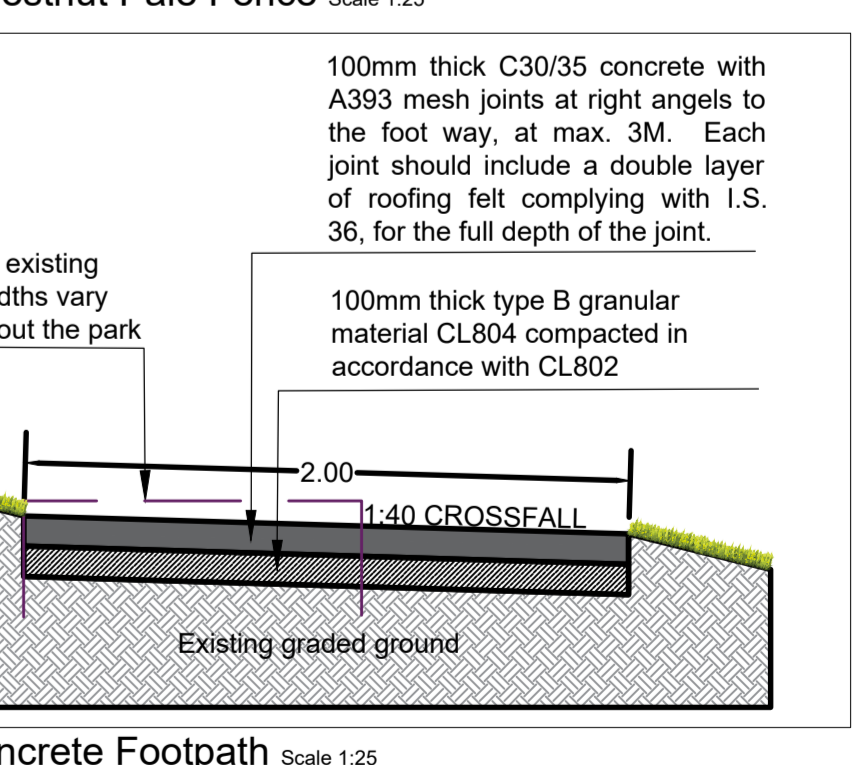
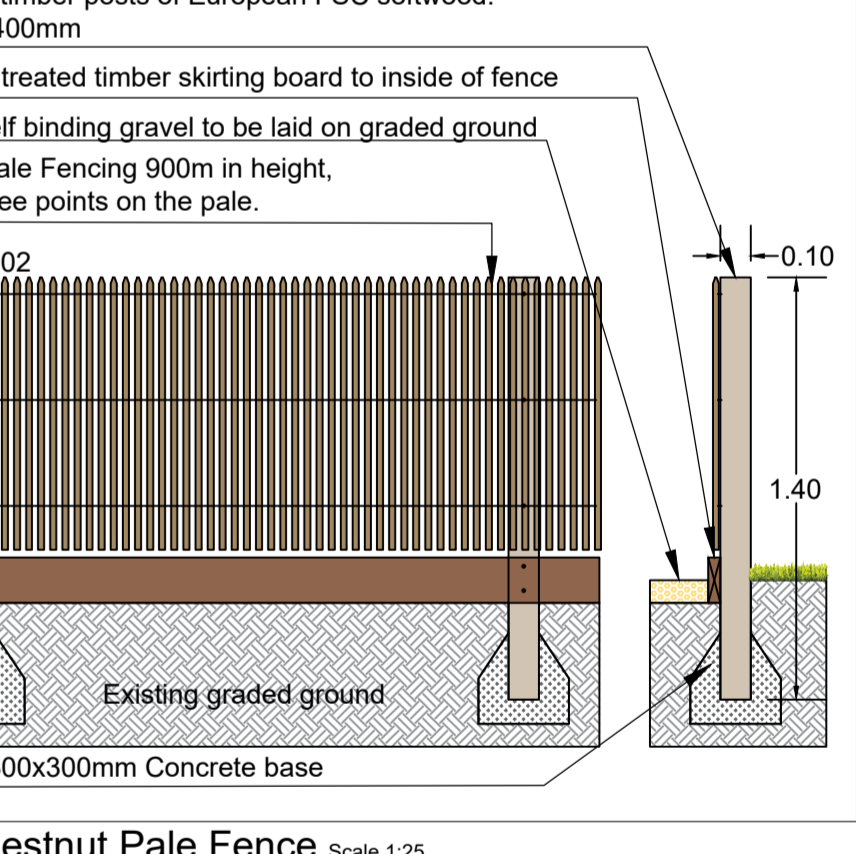
A treated timber knee rail is to be installed along the path that functions as a safety feature.

2.4.4 Steeper paths - not accessible for All

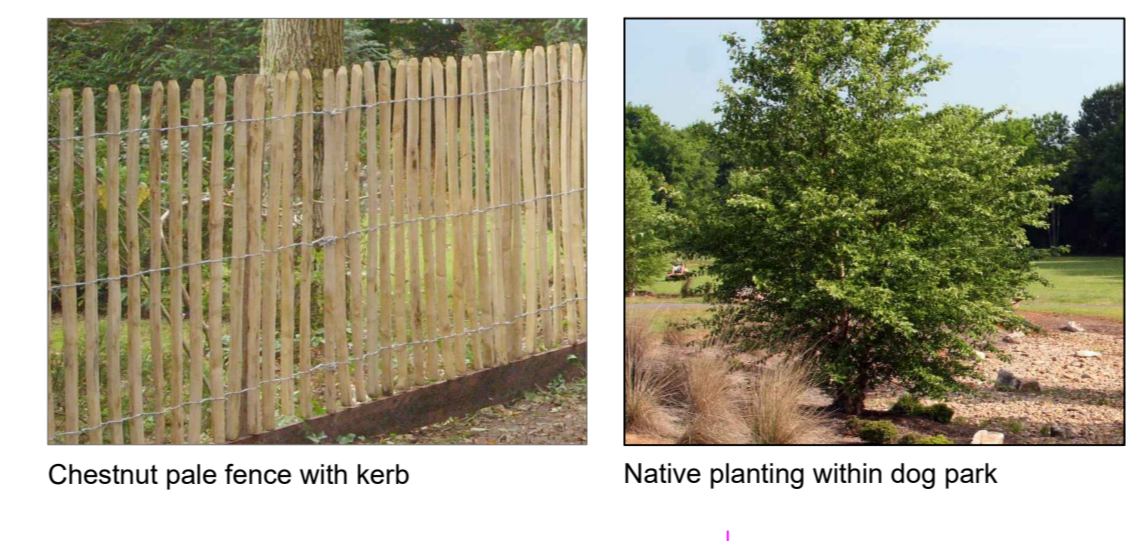
The fully accessible route will be clearly signposted and marked with ground plaques to follow along the route. The steeper paths will also be resurfaced and at every junction a plaque will show how you can follow the fully accessible route.

2.4.5 Self Binding gravel path to viewing point

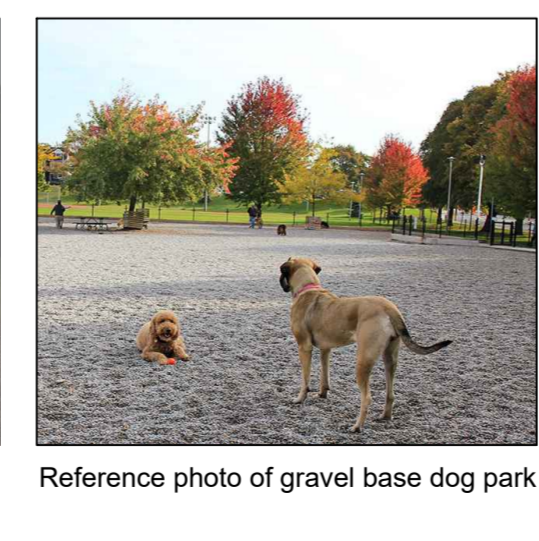
A 1.2m wide self binding gravel path with treated timber kerbing will bring the visitor up a steeper inclined route to existing viewing points. With Limestone seats, these will be retained and look out on the Motte and nearby quarry.



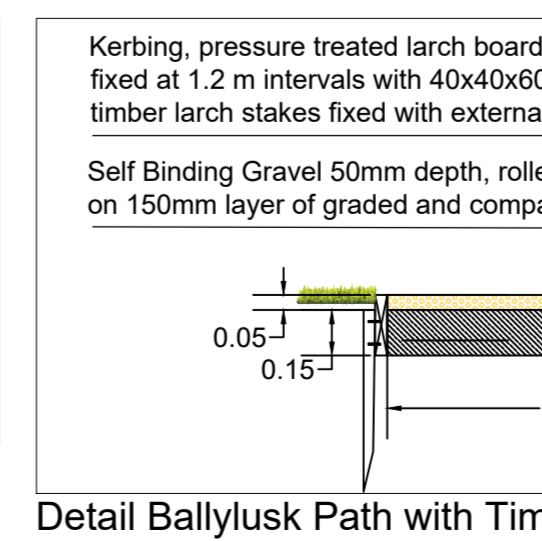
Detail Concrete Footpath Scale 1:25



Chestnut pale fence with kerb



Native planting within dog park



Reference photo of gravel base dog park



Detail Ballyusk Path with Timber Edge Scale 1:25

Client: Tipperary County Council
 Project: Tipperary Hills Restoration Project
 Drg Title: Detail sheet 2 of 2
 Stage: Planning Part 8
 Drg. No.: P528-104
 Scale: 1:200 or as shown @A1XL
 Date: 14th of February 2023
 Drawn By: RvS Checked by: TP

